

2023

C&O Canal 100

Runner Information

Packet

Table of Contents	Page
The C&O Canal and the Race Today	3
Awards	4
Race Schedule	5
General Information for Runners	7
General Information for Pacers	9
General Information for Crews	10
Medical Considerations	11
General Information: Other	12
Aid Station Locations	13
Aid Station Directions	14
Appendix A – Maps	17
Appendix B – More Aid Station Logistics	18
Appendix C – Pre-race meal menu	20
Appendix D – Post-race meal menu	21

The C&O Canal and the race today

The C&O Canal can trace its history back to the time of George Washington, who was one of the first advocates for connecting the Eastern seaboard to the interior Great Lakes and Ohio River through a series of waterways. Construction began in 1828 and progressed slowly westward from the Potomac River to Cumberland, MD in 1850. Unfortunately for all the hard-working laborers who made the canal possible, by that time the completion of the B&O Railroad several years earlier had rendered the canal obsolete as far as it's originally intended purpose.

Today the Canal extends from Georgetown in Washington D.C. 184.5 miles north-west towards Cumberland, MD and exists officially as the Chesapeake and Ohio Canal National Historical Park, under the administration of the National Park Service. Each mile of the canal is marked with a mile marker (starting at 0 in D.C.) and we will be running between miles 44.6 and 69.4 for the C&O Canal 100 race. I recommend that runners, family, and friends get out and enjoy the entire length of the Canal and all the wide range of sights and attractions it has to offer along the 184.5-mile distance, not only the small (relatively speaking) section we will be running on.

The history of the racecourse dates to 2012 when another planned 100-mile race had to change the course at the last minute and utilize the current C&O Canal 100 as an alternate route. With the realization that the C&O 100-mile course itself afforded a unique opportunity in the area for a 100-mile race in a beautiful part of Maryland, the current version of the race was officially started, with the inaugural race being held from April 27th-28th, 2013. In the end the intent of this event is to avoid large sponsorships and the more glamorous aspects of running in favor of providing dedicated and passionate runners a chance to throw themselves in the ring against the 100-mile distance and see if they have what it takes to come out on top, all the while providing the best support possible to you in your efforts. At the end of the day you will be tested physically, mentally, and emotionally but we hope you will feel well rewarded for the experience.

Awards

In keeping with the spirit of an event focused on fostering friendly ultrarunning spirit and camaraderie, there will be no prizes or awards for the top runners. All runners who officially finish within the 30-hour time limit will receive a belt buckle to commend their determination and perseverance to complete the distance. We hope you will wear this buckle proudly and have plenty of stories to tell your friends when they ask why you are walking around like a penguin for a week post-race.

Runners will receive premiums at packet pickup. Runners will receive their buckles and a technical hat immediately after crossing the finish line. Chipotle burritos and burrito bowls will be waiting for you at that time.

Race Schedule

Friday

1PM: Runners who plan to camp out overnight can begin to arrive any time after 1PM. You will need to pay \$5 per tent or small RV/camper. **Large RV campers are not allowed.** Someone should be at the pavilion to help direct you where to park and set up camp. Be sure to stay up against the tree line so there will be room for parking in the field below on race morning. NOTE: Don't camp completely flush against the tree line as runners will be running along the tree line in the field at race start. Leave at least a car width between your tent/tent stakes and the trees.

You may pick up your bibs and sign your waivers between 1PM and 5:30PM at the Pavilion near the top of the hill. No packets can be picked up after 5:30PM Friday. If you arrive after that, pick up your packet Saturday morning. Campers should plan to arrive no later than 10PM to respect fellow runners who want to try and get some sleep.

6PM: Pre-race dinner at Camp Manidokan in the dining hall

9PM: Quiet hours for campers begins.

Saturday

5:45AM: Runners may begin arriving at Camp Manidokan. Please do not arrive before 5:45AM. I know everyone is eager to nervously sit in your car prior to the race, but we won't be ready for you before that time. When you arrive, you will be directed by race volunteers to park in the field.

5:45AM-7:00AM: If you did not already receive your bib number you can obtain your bib number and sign the race waivers from the pavilion near the top of the hill. **You must still check in on race morning even if you received your number on Friday to let us know you are starting the race.**

Distribute your drop bags to the appropriate locations. There will a zone on the grass near parking marked off for the Brunswick aid station. The

Manidokan drop bag location will be behind the race pavilion, also marked off with a sign. The Manidokan drop bags will remain where they are placed. If needed, ask a volunteer for help finding your way. Volunteers should be wearing green long sleeve shirts or orange safety vests. Please label your drop bag with the following information in waterproof ink:

- Name
- Bib number
- Aid station

We will arrange the drop bags by bib number to facilitate finding them, so it is crucial that your drop bags are clearly marked.

7:00AM – Race start!

Sunday

Saturday ~11:00PM – Sunday 1:00PM: The post-race meal will be ready for you as you finish. The meal will be Chipotle burritos and burrito bowls (bowls for vegans only).

1:00PM: Race time limit. Anyone who has passed the last cutoff time will be allowed to proceed to the finish line, but they will not receive a belt buckle or official finish time if they finish after 30 hours. Your buckle and post-race premium will be handed out as you finish.

~1:30PM: Breaking down of the race HQ.

General Information for Runners

- Getting to this race involves traveling over narrow back roads with sharp turns, especially travelling to and from the race start at Camp Manidokan. Allow extra time to safely drive on these unfamiliar roads and be sure to carefully read the instructions to minimize your chances of getting lost. The race will start at 7AM sharp.
- Camp Manidokan does NOT allow alcohol of any kind. Please wait until you leave to enjoy your celebratory beverage!
- Runners must always wear their race numbers while on the course.
- Runners are responsible for knowing where they are on the course and proceeding in the correct direction. If you should be heading west the canal should be on your right and the river should be on your left. If you are heading east, the opposite should be true. As described on the race website, running east would eventually take you to Washington D.C., while running west would eventually take you to Cumberland, MD. While we don't expect anyone to get lost, the worst-case scenario is that you will get to an aid station and be told you already came from there. You were just getting in a few bonus miles!
- The only tricky turn is the trail leading up to Manidokan. There will be an orange construction cone with an LED light placed along the canal at the turnoff. Look for the cone ~6.5 miles after you leave the Keep Tryst AS inbound. Most runners are so eager for the turnoff they have no trouble finding it. Other than that, the C&O Canal portion of the course will not be marked. There will be orange flagging and reflective tape marking the trail up to/from Manidokan.
- Each time you get to an aid station, you are responsible for checking in with an aid station volunteer. Make sure the person holding the clipboard or tablet sees you **and** your number. There may be other events occurring on the Canal that weekend and we want to minimize any possible confusion. Our bibs are clearly marked with our event so this should minimize any issues.

- **IMPORTANT: If you decide to drop from the race, you must do so at a designated aid station and you must tell an aid station captain that you are dropping. You must also turn in your bib number. Failure to do so will result in disqualification from any future C&O Canal 100 events.**
- If you drop from the race at an aid station, your crew can come pick you up from that location.
- If you drop from the race and leave early with your crew, be sure to pick up your drop bags at the Brunswick and Manidokan aid stations. We don't need any extra pairs of dirty socks! Brunswick drop bags will be brought back to Manidokan after the aid stations have closed (late Sunday morning), so you may also pick-up drop bags at that time.
- If you drop from the race and you do not have a crew, we will try to get you back to Manidokan as soon as possible. Aid station volunteers coming and going from shifts might be able to give you a ride, or you could ride with another runner's crew. Please be patient. Uber is usually available in the area as well.
- If you reach an aid station after the cutoff, you will be unable to continue the race.
- The C&O Canal 100 course provides a unique terrain for running. The packed dirt towpath may seem to be quite tame initially, however the small gravel rocks will grow as the miles wear on, and your feet will start to take a beating. Additionally, those little rocks will do their best to find ways to sneak into your shoes as often as they can. Runners in general should come prepared with alternative pairs of shoes to account for how your feet might feel as the day goes on and bring gaiters to prevent the rocky invaders.

General Information – Pacers

- Pacers are allowed at any point after the 60-mile Brunswick AS (second time through).
- Pacers must be runners; cycling pacers are not allowed.
- Remember that **pacers may not park** at any aid stations outside of Camp Manidokan and Brunswick (in the MARC train lot). Your crew can drive up briefly and drop off a pacer, but if your car is in park, you are breaking the rules.
- Pacers may not carry any aid or supplies (aka “muling”) for their runners or otherwise assist them outside of pacing duties when not at an aid station. While at an aid station, pacers can assist with volunteers in helping their runners, but once the aid station is out of sight the aid must stop.
- Pacers found to be in blatant violation of the above rules may lead to the disqualification of their runner.

General Information – Crews

- Crews are only allowed to provide support to their runners at the Brunswick aid station and Camp Manidokan/Race HQ. At any other aid station, crews are only allowed to drop off or pick up a pacer, or pick up a runner who has dropped from the race. Crews accessing their runners at the Brunswick aid station must park in the MARC train lot, not the canal access parking lot(s). The C&O Canal is used by thousands of people daily, and we must be courteous to other canal users and give them fair access to the canal as well.
- Crews are responsible for respecting the canal and other canal users. This includes giving other bikers/walkers/runners plenty of space and not littering.
- Crews should obey any directions given by aid station volunteers. Runners whose crews are found to violating these rules will be subject to disqualification.
- **Under no circumstances should crews meet a runner at a non-official crewed aid station canal access point. We will have people monitoring these locations and any crews observed helping a runner will have their runner immediately disqualified from the race. NO EXCEPTIONS!**
- The rules of crew canal access are put forward by the National Park Service as part of our permit for this race. Respect for these rules is crucial for our ability to successfully acquire permits to hold this race. The National Park Service WILL be monitoring the race to ensure that we are upholding all of the rules they have required.

Medical Considerations

- All aid stations will have the various first aid necessities of a 100-mile race. Because this race is in April, you should be prepared for all types of extreme weather (hot and humid, or cold and rainy) and know how to prepare accordingly. If at any point during the race an aid station captain deems that you are not well enough to continue the race, they reserve the right to halt your progress until your condition improves or remove you from the race all together. Their decision is final. Protecting the safety of all runners is our top priority.
- If you have a unique medical condition that race volunteers should know about in the event of an emergency, please write it on the back of your race number with a water-proof ink. Aid stations will have lists with emergency contact information should they need to call someone in the event of an emergency.
- Runners, pacers, or crew members who require medical assistance outside of basic first aid available at aid stations will be held financially responsible for their own injuries. You signed a waiver when you registered for the race, and you acknowledged this as well as the fact that participating in an event like this has the potential to be dangerous to your health (including communicable diseases).
- Note: due to the potential for associated health risks, aid stations will not carry pain killers for runners. If you anticipate wanting to use them during the race, you may carry them with you or place them in drop bags and use them at your own risk.

General Information – Other

- Drop bags may get wet. Drop bags brought to the race start and placed in the appropriate piles should be waterproof. At the aid stations every effort will be made to keep bags dry but you should be prepared for the worst. Water sensitive items should be placed inside something dry. Drop bags left over when the aid stations close will be brought back to the race start. All drop bags must be picked up by 2PM on Sunday. Drop bags will not be mailed to runners. The contents of abandoned drop bags will be donated immediately after the race.
- Drop bags for the Brunswick aid station must be no larger than 6x8x 16". Each runner is allowed one drop bag for Brunswick and one for Manidokan. Pacers are not allowed to have drop bags. There are no size restrictions for the Manidokan drop bag placed near the start/halfway point/finish. You're welcome to haul a giant drop bag up there if you want. Just make sure you haul it back to your car after the race.
- Drop bags which do not meet the specified dimensions for the Brunswick aid station will be turned away. To avoid having to scramble on race morning to re-pack your bag, make sure it conforms to the dimensions before you arrive.

Aid Station Locations

Below are GPS coordinates and links to the location on Google Maps for all aid stations as well as Camp Manidokan. (In some cases the coordinates given may not be the exact coordinates of the AS, but rather a point closest to the AS on a road that your GPS would recognize.) Google locations lead to the closest road access point. If you can't find the aid station, walk towards the river. *Note: the directions are given for going between Camp Manidokan and all aid stations. There may be a more direct route between two individual aid stations. All aid stations will have at least two port-a-pots for use by runners. There may also be official C&O Canal "outhouses" (not quite, but close enough). I can say from experience you probably want to use our port-a-pots instead of these "outhouses".*

- [Camp Manidokan](#): 39.3567°N, 77.7339°W
Address: 1600 Harpers Ferry Rd, Knoxville, MD 20733
- [Antietam AS](#): 39.4215°N, 77.7485°W
- [Dargan Bend AS](#): 39.3632°N, 77.7398°W
- [Keep Tryst AS](#): 39.3299°N, 77.6817°W
- [Brunswick AS](#): 39.3115°N, 77.6273°W

Aid Station Directions

Directions to Manidokan from Frederick, MD (est. 30 minutes)

- Drive 16 miles on US 340W.

Due to construction on Sandy Hook Rd. please follow the detour described below or use GPS to help navigate around the closure.

<https://home.nps.gov/choh/planyourvisit/repair-level-33-dry-laid-stone-wall.htm>

- ~~Turn left onto Keep Tryst Rd. **If you see a sign welcoming you to West Virginia, you went too far.**~~
- ~~Drive 0.2 miles on Keep Tryst Rd.~~
- ~~Turn Right onto Harper's Ferry Rd.~~
- ~~Drive 1.6 miles on Sandy Hook Rd., continue 2.7 miles on Harper's Ferry Rd. **Follow the signs for Manidokan posted along the way.** At one point there is a sign which points to the right for Manidokan but in the past it has been confused for pointing left. **Do not turn left here (onto the narrow and poorly maintained paved Back Rd.)** Be forewarned of narrow and winding roads on this stretch, drive with caution. The destination will be on your left.~~

Directions to Antietam AS from Camp Manidokan (est. 12 minutes)

- Turn left coming out of Manidokan onto Harper's Ferry Rd.
- Proceed 5.8 miles on Harper's Ferry Rd. You know you are getting close when you drive over a stone one-lane bridge.
- Turn left onto Canal Rd.
- Drive 0.1 miles on Canal Rd. Destination will be on your left.

Directions to Dargan Bend AS from Camp Manidokan (est. 3 minutes)

- Turn Right coming out of Camp Manidokan onto Harper's Ferry Rd.
- Proceed 0.4 miles. Turn Right onto Back Rd. Back Rd. may be unmarked, or the sign may be difficult to see. You should see a sign

pointing you in the direction you came (to Manidokan) you want to go the other way.

- Drive 0.8 miles on Back Rd. Dargan Bend Parking area/AS will be on your left.

Directions to Keep Tryst Rd. AS from Camp Manidokan (est. 11 minutes)

Due to construction on Sandy Hook Rd. please follow the detour described below or use GPS to help navigate around the closure.

<https://home.nps.gov/choh/planyourvisit/repair-level-33-dry-laid-stone-wall.htm>

- ~~Turn Right coming out of Camp Manidokan onto Harper's Ferry Rd.~~
- ~~Proceed 2.7 miles on Harper's Ferry Rd., proceed onto Sandy Hook Rd. for 1.6 miles.~~
- ~~Turn Right onto Keep Tryst Rd. Proceed 0.9 miles on Keep Tryst Rd. The aid station will be located through the gate and across the train tracks.~~

Directions to Brunswick AS from Camp Manidokan (Est. 20 minutes)

Due to construction on Sandy Hook Rd. please follow the detour described below or use GPS to help navigate around the closure.

<https://home.nps.gov/choh/planyourvisit/repair-level-33-dry-laid-stone-wall.htm>

- ~~Turn Right coming out of Camp Manidokan onto Harper's Ferry Rd.~~
- ~~Proceed 2.7 miles on Harper's Ferry Rd., proceed onto Sandy Hook Rd. for 1.6 miles.~~
- ~~Turn Left onto Keep Tryst Rd. Proceed 0.2 miles and then merge onto US 340 E.~~
- ~~Drive 1.8 miles and take the MD-180 W/Knoxville exit toward MD-478/Brunswick.~~
- ~~Merge onto MD-180 E.~~

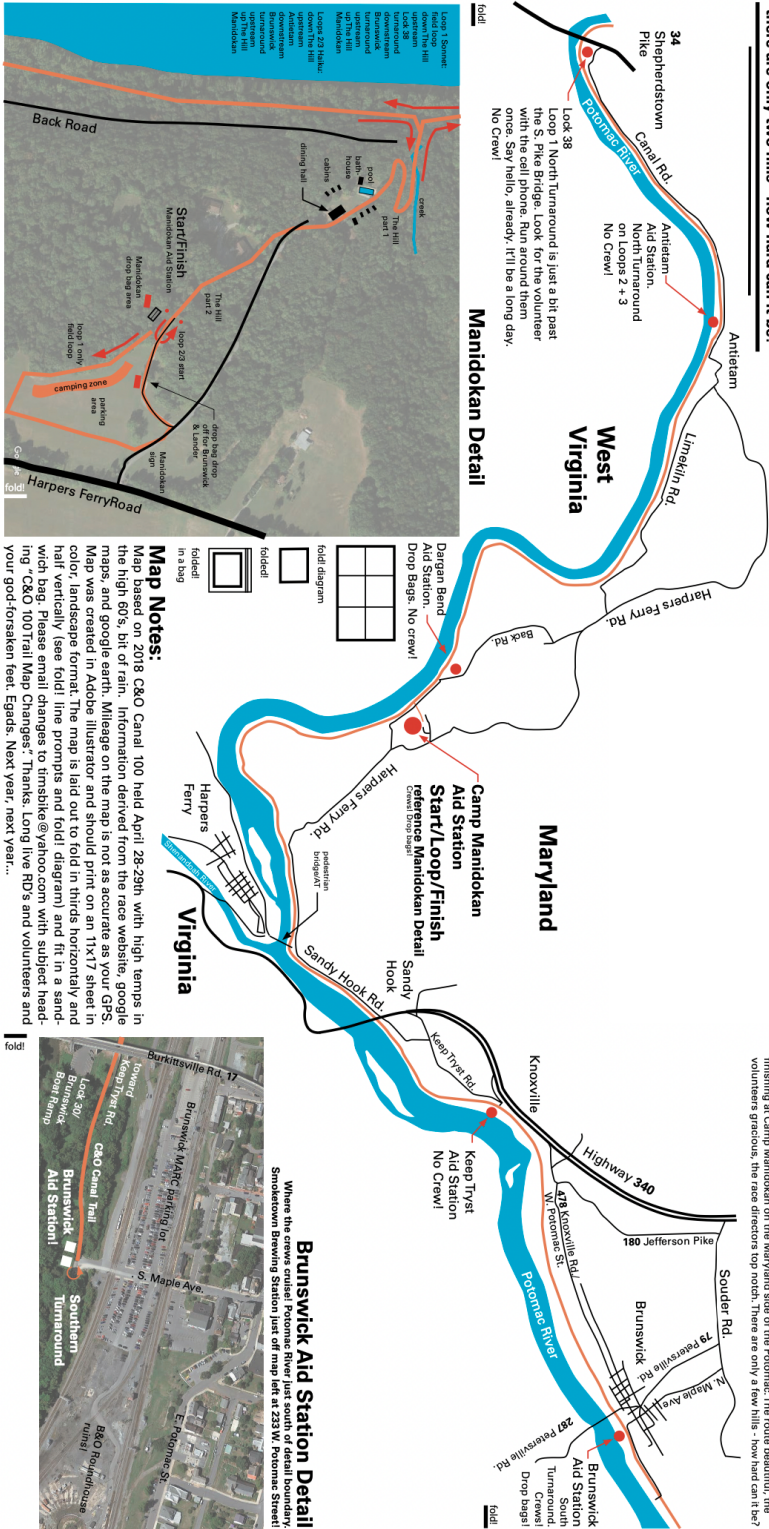
- ~~At the intersection with the Church, turn right onto MD-478 E/ Knoxville Rd.~~
- ~~Proceed 2.3 miles. In the center of town (Brunswick) at the stoplight, turn right onto South Maple Avenue. *Note, follow the speed limit carefully in within the City of Brunswick. The police are notorious for pulling people over for doing slightly over the speed limit (e.g. 2MPH).*~~
- ~~Proceed across the first set of train tracks and park in the MARC lot. The AS will be located across the second set of train track down a small hill.~~

Appendix A – Maps

A full size PDF can be found [here](#). Note this map is being updated with [correct distances](#).



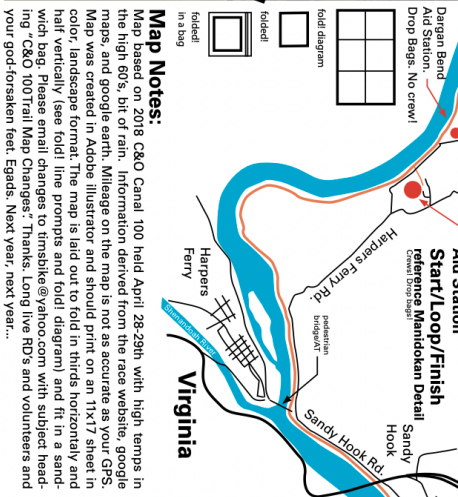
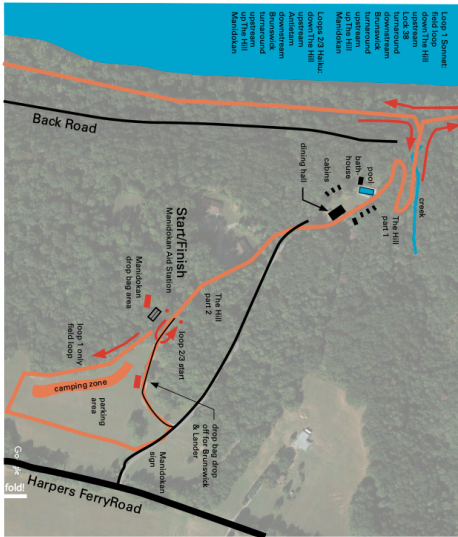
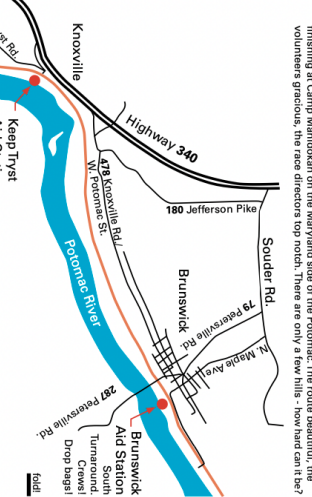
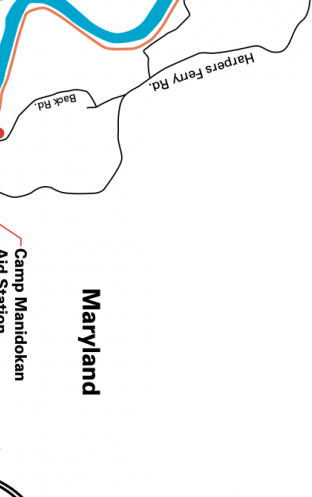
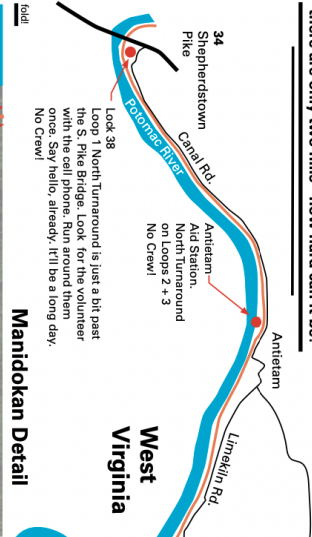
there are only two hills - how hard can it be?



A 100 Mile Footrace along The Chesapeake and Ohio Canal

The C&O Canal's first construction spadeful of dirt turned over on to July 4th, 1828 by some guy named Adams. That's the first day of construction for the nation's first canal, to connect the Ohio River and the Chesapeake Bay. Navigation on completed sections began as early as 1831. Economic depressions and three major floods sent the canal operation into receivership in 1883, when the Baltimore & Ohio Railway bought and operated the canal from the C&O Canal Company. In the aftermath of the 1924 flood, canal operations ceased. The canal was abandoned in the 1950s and the National Park Service operates the 185-mile National Historical Park.

The C&O Canal 100 runs two loops between Lock 34 and Brunswick, starting and finishing at Camp Manidokan on the Maryland side of the Potomac. The route beautiful, the volunteers gracious, the race directors top notch. There are only a few hills - how hard can it be?



Appendix B – More Aid Station Logistics

Start Time	7.00				
* indicates Saturday			Front of the Pack	30 hour even splits	Cutoffs
‡ indicates Sunday	Average Pace	----->	8.00	18.00	
Aid Station	MILE	Section Distance (miles)	Aid station arrival time	Aid Station Arrival Time	
Manidokan-Start	0				
Dargan Bend	1.4	1.4	7:11*	7:25*	
Antietam Campground	6.3	4.9	7:53*	8:53*	
North Turnaround	10.5	4.2	8:26*	10:01*	
Antietam Campground	14.7	4.2	8:58*	11:10*	
Dargan Bend	19.6	4.9	9:40*	12:38*	
Keep Tryst Rd.	26.5	6.9	10:39*	14:42*	
Brunswick	29.6	3.1	11:06*	15:38*	
Keep Tryst Rd.	32.7	3.1	11:32*	16:34*	
Manidokan	39.2	6.5	12:28*	18:31*	
Dargan Bend	40.2	1.0	12:36*	18:56*	
Antietam Campground	45.1	4.9	13:22*	20:24*	
Dargan Bend	50.0	4.9	14:04*	21:52*	
Keep Tryst	56.9	6.9	15:03*	23:57*	
Brunswick	60.0	3.1	15:29*	00:52‡	
Keep Tryst	63.1	3.1	15:56*	01:48‡	
Manidokan	69.6	6.5	16:51*	03:45‡	03:45‡

Dargan Bend	70.6	1.0	17:03*	04:10‡	
Antietam Campground	75.5	4.9	17:45*	05:39‡	
Dargan Bend	80.4	4.9	18:27*	07:07‡	06:45‡
Keep Tryst Rd.	87.3	6.9	19:26*	09:11‡	
Brunswick	90.4	3.1	19:52*	10:07‡	09:45‡
Keep Tryst Rd.	93.5	3.1	20:19*	11:03‡	
Manidokan	100.0	6.5	21:15*	13:00‡	13:00‡

Aid station mileages and paces for estimated front of the pack and 30 hour even pace runners. A runner must leave an aid station by the listed cutoff time to be allowed to continue the race.

Appendix C – Pre-race Dinner Menu

All the sauces will be vegetarian and diners can add meat items in should they choose. All the sauces are from scratch in house.

Menu

- Salad Bar in the dining hall
- Penne with a garlic cream sauce
- Farfalle(bowtie) with a roasted tomato/fresh basil sauce
- Linguini with a traditional tomato sauce
 - Grilled chicken add in
 - Meatball add in
- Bread both garlic and plain
- Hot drinks: Coffee, Tea and hot chocolate available
- Cold Drinks: Iced Tea, Lemonade, Water
- Dessert: brownies or similar

Appendix D – Post-race meal menu

After you finish the race, you will receive your buckle and your race premium immediately after finishing. You can then take some time to rest at the Manidokan Pavilion and enjoy a meal of Chipotle burritos or burrito bowls (if vegan). We will also have sweet treats and assorted drinks.

Burrito Menu

Protein choices: chicken, carnitas, steak, barbacoa, sofritas, veggie

All burritos will contain cilantro-lime white rice, black beans, cheese, tomato salsa

Sides: chips, salsa, guacamole

Bowl Menu (vegan only)

Bases: black beans, cilantro-lime white rice

Proteins: guacamole, sofritas

Toppings: fajita veggies, lettuce, more guacamole, tomato salsa, roasted corn salsa

The burritos will be picked up late Saturday night (9PM) and Sunday morning (~11:30AM) and kept warm and ready to go for you as you finish. The burrito bowl option is only available to vegans.